

A GUIDE TO

# CDL COMPLIANCE

# What is a CDL?

- Defined in 49 CFR part 383.5

# What is a CMV?

- A motor vehicle or
- combination of motor vehicles
- used in commerce
- to transport passengers or property

# What is a CMV?

- Combination Vehicle (Group A, Determined by weight)



# What is a CMV?

- Heavy Straight Vehicle (Group B – Determined by weight)

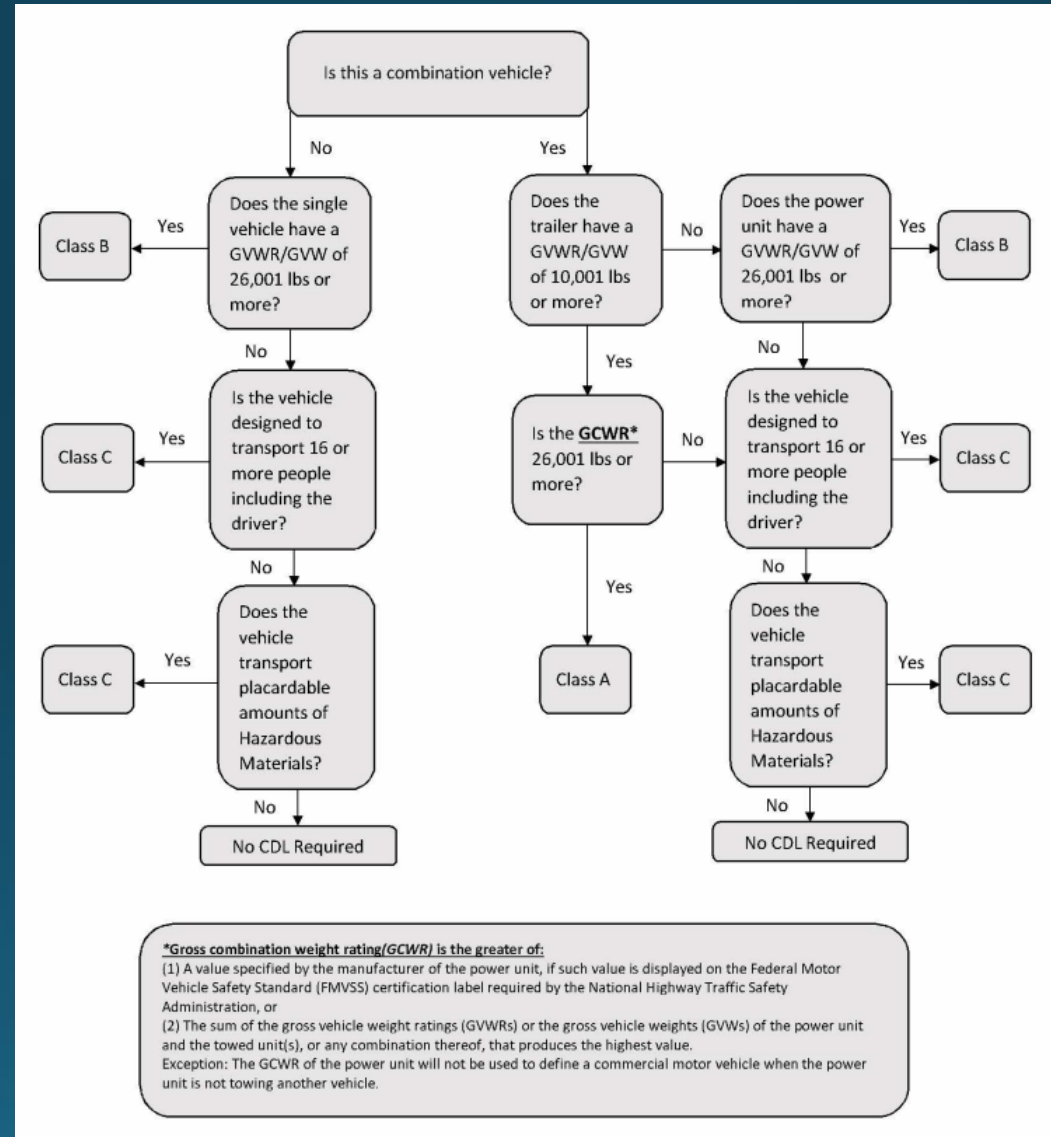


# What is a CMV?

- Small Vehicle (Group C, determined by endorsements)



# A Quick Guide to Who needs a CDL?



# When do I need endorsements?

<b>Commercial Driver's License (CDL)</b>		
<b>CDL ENDORSEMENTS</b>		
<b>Double/Triple Trailers (T)</b> 	<b>Passenger Vehicles (P)</b> 	<b>Tank Vehicles (N)</b> 
<b>Hazardous Materials (H) (any size vehicle)</b> 	<b>School Buses (S)</b> 	<b>Tank &amp; Hazardous Materials (X)</b> 



# Are there any exemptions to the CDL requirements?

- Military Drivers
- Farmers
- Firefighters/Emergency Response
- Drivers removing snow and ice???

How do I obtain my CDL?

ARE YOU AN ENTRY-LEVEL DRIVER?



# What is an Entry-Level Driver?

- Do not currently possess a CDL.
- Did not obtain a CLP prior to Feb 7, 2022.
- Less than 1 year experience.

# Entry Level Driver Training (ELDT)

- Title 49 CFR, Section 380.601 Defines
- Theory or
- Behind-the Wheel (BTW)

# What if I'm not an Entry-Level Driver, but want to upgrade my CDL?

- You must take instruction if:
  - CDL for first time.
  - Upgrading from Class B to Class A.
  - Obtaining a S, P, or H/X endorsement for 1<sup>st</sup> time.



# Does this apply to municipalities?

- Yes.
- 390.3(f)(2) exempts but leaves it up to the state.
- MCL 257.312(f) requires CDL.

# Can the SOS waive the requirement?

- Yes, but Michigan has waived for only:
  - Farm operations.
  - Valid license in other state.
  - Passed a driving skills test in another state.
  - Military CMV experience.



# Must a new driver go to a school?

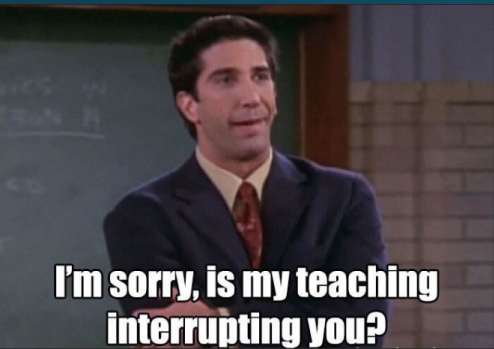
- Yes, but there's an exception.
- 380.713 Instructor Requirements.

# What is a Theory Instructor?

- Provides knowledge instruction on the operation of a CMV and:
- Holds a CDL of the same (or higher) class w/ 2 years experience.

OR

- Holds CDL of same (or higher) w/ 2 years BTW Instructor.



# What is a BTW Instructor?

- An individual who provides actual operating of a CMV on a range or public road and:
- Holds a CDL of the same (or higher) class w/ 2 years experience

OR

- Holds CDL of same (or higher) w/ 2 years BTW Instructor.



# MEDICAL CERTIFICATES

**SO... TELL ME EVERYTHING**

**YOU TOLD THE NURSE  
5 MINUTES AGO**



# WHO NEED A MEDICAL CERTIFICATE?

- DRIVING A CMV OVER 10,000 LBS? YOU MUST BE CERTIFIED!!!



# When do I need to keep the certification on me?

- Driver of any CMV from 10,001 – 26,000 LBS intrastate.
- If you are self-certified certified as non-exempted intrastate.

# PERIODIC INSPECTIONS



# When are periodic inspections required?

396.17(a)

- All vehicles that meet the definition of a CMV per 390.5.



# When are periodic inspections required?

- 396.17(c)
  - Required every 12 months.

# Are there exemptions?

- Transportation performed by:
  - Federal government
  - A State
  - Any political subdivision of a State, or
  - Any agency established under a contract between States approved by the Congress of the US.

**The Village of Lakeview qualifies under this exemption!**

# QUESTIONS?

MC Ofcr. Steven Frizzell  
Michigan State Police  
Commercial Vehicle Enforcement Division  
Mount Pleasant Post  
Cell: (734) 790-6890  
Email: [frizzells@michigan.gov](mailto:frizzells@michigan.gov)